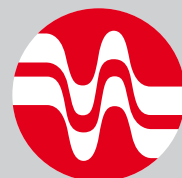


ADVANCED
HEAT TRANSFER
SOLUTIONS

BRAZED PLATE HEAT EXCHANGERS



ONDA

GARANZIA

A - ONDA S.p.A. garantisce l'assenza di vizi e difetti nella lavorazione e nei materiali dei propri Prodotti per 18 mesi dalla data della consegna. Pertanto ove, durante il periodo di garanzia, gli eventuali difetti dei Prodotti risultino oggettivamente fondati e siano riconosciuti per iscritto da ONDA S.p.A., quest'ultima provvederà gratuitamente alla riparazione o, a sua discrezione, alla sostituzione dei Prodotti difettosi, con consegna effettuata franco fabbrica (Ex Works – Incoterms 2000).

Stabilimento di ONDA in via Lord Baden Powell, 11 – 36045 Lonigo (VI).

B - Pena di decadenza dalla garanzia, il Cliente dovrà comunicare per iscritto, a mezzo raccomandata con ricevuta di ritorno, i vizi o i difetti riscontrati entro e non oltre 10 (dieci) giorni dal ricevimento dei Prodotti presso la sede del Cliente o altro luogo da questi indicato o, trattandosi di vizi e/o difetti occulti, entro e non oltre 10 (dieci) giorni dalla scoperta degli stessi. In questo caso, l'onere della prova della data della scoperta graverà sul Cliente.

C - ONDA S.p.A. garantisce inoltre che i Prodotti sono fabbricati in conformità alle leggi italiane e alle normative comunitarie vigenti alla data di conferma da parte di ONDA S.p.A. del relativo ordine del Cliente.

Salvo diverso accordo scritto tra le parti, tutte le altre spese accessorie agli interventi di sostituzione e/o di riparazione, saranno a carico e a rischio del Cliente.

D - La garanzia è esclusa qualora i vizi o difetti dei Prodotti siano stati determinati dalle seguenti cause:

- naturale usura e deterioramento;
- riparazioni o modifiche non autorizzate;
- uso e applicazione impropri;
- eccessiva sollecitazione termica, anche occasionale;
- eccessiva sollecitazione elettrica o meccanica;
- mancato rispetto dei parametri funzionali e ambientali indicati da ONDA S.p.A. per il corretto impiego e funzionamento dei Prodotti;
- installazione dei Prodotti difforme da quella indicate nelle specifiche tecniche fornite da ONDA S.p.A.;
- qualsiasi altra causa imputabile a negligenza del Cliente.

E - La garanzia è inoltre esclusa in caso di:

- eventuale non conformità dei Prodotti a leggi e/o normative in vigore nel luogo in cui i Prodotti sono installati e/o assemblati dal Cliente e/o nel luogo di finale utilizzazione dei Prodotti, qualora il Cliente non abbia espressamente richiesto la conformità dei Prodotti a tali leggi e/o normative e non abbia regolarmente informato ONDA S.p.A. del loro contenuto prima della data di trasmissione della conferma d'ordine di quest'ultima.
- Resta inteso che la presente limitazione si intende efficace anche con riferimento a specifiche normative vigenti in Stati dell'Unione Europea ed applicabili in via autonoma rispetto alle normative comunitarie.

F - In caso di eventuale non conformità dei Prodotti a leggi e/o normative italiane e/o estere entrate in vigore dopo la data della trasmissione della conferma d'ordine di ONDA S.p.A. è esclusa la sostituzione in garanzia dei Prodotti o il loro eventuale adeguamento in garanzia alle nuove normative.

La Onda S.p.A. declina, comunque, ogni responsabilità riguardo l'utilizzo di Prodotti non conformi a leggi e/o normative italiane e/o estere entrate in vigore dopo la data della trasmissione della relativa conferma d'ordine di ONDA S.p.A..

G - Il Cliente non dovrà vendere o commercializzare Prodotti non conformi alle leggi e/o normative indicate nella precedente lettera E-F. In caso contrario, il Cliente solleva ONDA S.p.A. da ogni danno e/o perdita dalla stessa sofferto in seguito a contestazioni, sollevate in via giudiziale o stragiudiziale, da qualsiasi soggetto terzo o da pubblica autorità in conseguenza della fabbricazione da parte di ONDA S.p.A. di prodotti non conformi alle summenzionate leggi e/o normative.

H - Ferma restando l'applicazione del DPR 224/1988, in materia di responsabilità per danno da prodotti difettosi, e la responsabilità di ONDA S.p.A. in caso di dolo o colpa grave, quest'ultima non sarà in alcun caso responsabile per i danni diretti, indiretti o incidentali che dovessero in qualsiasi modo derivare dalla difettosità dei Prodotti

WARRANTY

A - ONDA S.p.A. warrants that the Products shall be free from defects in material and workmanship for a period of 18 months from the date of the delivery. Therefore, should ONDA S.p.A., within the warranty period, acknowledge and recognise in writing the existence of the defects in the products and said defects be materially grounded, ONDA S.p.A. shall, at its discretion, repair the defective Products at no costs for the Client or replace them by delivering the substitutive products Ex works (Incoterms 2000) at ONDA S.p.A.'s premises. ONDA's facilities located at via LORD Baden Powell, 11 – 36045 Lonigo (VI).

B - Subject to loss of the warranty, notice of any defect shall be given by the Client in writing with return receipt registered letter within, and not later than, 10 (ten) days from the date of receipt of the products at the Client's premises or in the different delivery place, previously indicated by the latter.

Subject to loss of the warranty, notice of any latent defect of the Products by the Client shall be given in writing, by return receipt registered letter, within and not later than 10 (ten) days from the date of the relevant discovery. It is hereby understood that the burden of the proof of the date of the discovery shall be borne by the Client.

C - ONDA S.p.A. also warrants that the Products are manufactured in compliance with the Italian and European Laws and Regulations in force on the date of the confirmation by ONDA S.p.A. of the relevant Client's order. Unless otherwise expressly agreed in writings by the parties, Client shall bear any other additional expenses related to the operations of repairing or replacing of the defective products.

D - This warranty shall not apply should the defects of the Products be caused by:

- natural wear and tear;
- unauthorised repairs or modifications;
- unsuited use or application;
- thermal overexposure, also when occasional;
- electrical or mechanical over-stress;
- failure of respecting the functional and environmental parameters suggested by ONDA S.p.A. for the correct use and exploitation of the products;
- installation of the products not in compliance with the technical specifications provided by ONDA S.p.A.;
- any other cause due to the Client's negligence or to occasional faults of the products as consequence of mass-production procedures.

E - This warranty shall also not apply in case of:

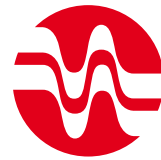
- non compliance of the Products with Laws and/or Regulations in force in the place where the Products are installed and/or assembled by the Client and/or in the place of their final use, should the Client not expressly require the conformity of the Products to said Laws and Regulations and not duly inform ONDA S.p.A. of their content before the date of transmission of the latter's order confirmation.
- This limitation of the warranty is also applicable with reference to peculiar Laws and Regulations valid and binding in States of the European Union independently of the European Laws and Regulations.

F - In the case of non compliance of the Products with Italian and/or foreign Laws and/or Regulations entered in force after the date of transmission of the order confirmation by ONDA S.p.A., the replacement or any possible adjustment under warranty conditions will not be applied.

ONDA S.p.A. is, at any rate, not responsible for the use of the Products not conform to Italian and foreign Laws and/or Regulations entered in force after the date of transmission of their order confirmation by ONDA S.p.A.

G - The Client shall not sell or market Products not in compliance with the Laws and Regulations mentioned under letter E-F above. In the negative, the Client shall keep ONDA S.p.A. harmless of any damage or loss suffered by the latter, due to any third party's and/or authority's claim raised as a consequence of the manufacture by ONDA S.p.A. of Products not in compliance with the above mentioned Laws and Regulations.

H - Without prejudice to the application of DPR 224/1988 on product liability and liability for gross negligence or wilful misconduct, ONDA S.p.A. shall never be liable for direct, indirect or occasional damages which in any manner derived from defective products



New Onda generation

CODICE SCAMBIATORI A PIASTRE
Braze Plate Heat Exchangers code

X 009 040 AA 0 0000

Carattere fisso / Fixed data

Modello es. / Item i.e.: S09, S12, S82, ecc

Numero Piastre / Plates no.

Combinazione / tipologia attacchi (vedi pag. 15)
Configuration / connections no. (see page 15)

Impiego / Operating:

0 = serie normale/condensatore - 1 = serie D con distributori/evaporatore
2 = serie H altapressione - 3 = serie HD altapressione con distributori
0 = standard / condensator - 1 = D serie with distributor / evaporator
2 = H serie for High Pressure - 3 = HD for High Pressure with distributor

Solo per bicircuiti / Only for Double Circuit:

4 = serie I incrociata - 5 = serie ID incrociata con distributore
6 = serie IH incrociata altapressione - 7 = serie IHD incrociata altapressione con distributori
4 = I serie for Cross circuit - 5 = ID serie for Cross circuit with distributor
6 = IH for High Pressure with Cross circuit - 7 = IHD for High Pressure with Cross circuit and distributor

Progressivo numerico che identifica i tipi e le combinazioni dei raccordi

Progressive number to identify size & type connections

DESCRIZIONE CODICE PIASTRE:
Braze Plate Heat Exchangers code description

BPHE S82 D 90

F1=ODS22 F2=ODS35
W1=G1"1/4CM W2=G1"1/4CM
BW1=G1"1/4CML BW2=G1"1/4CML

Identificazione Scambiatori a Piastre / Fixed data

Modello es. / Item i.e.: S09, S12, S82, ecc

Esecuzione - Utilizzo Scambiatore

Operating condition :

vuoto = serie normale/condensatore
D = serie con distributori/evaporatore - H = serie altapressione
HD = serie altapressione con distributori
Empty space = standard / condensator
D = distributor / evaporator serie - H = High Pressure serie
HD = High Pressure with distributor serie

Numero Piastre / Plates no.

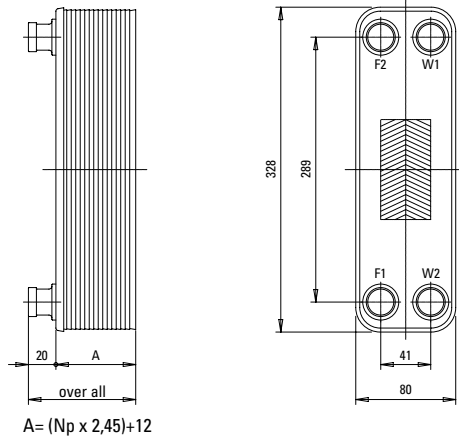
Tipo attacchi / Connections type:

ODS..... = attacchi a saldare + dimensione tubo
VIC..... = attacco flessibile + dimensione
RTLK..... = attacco rotalock + dimensione
G..... CM = attacchi filettati + dimensione filetto + tipo filettatura
ODS.... = Outer soldering pipe diameter
VIC.... = Flexible Joint and pipe diameter
RTLK.... = Rotalock type and outer soldering pipe diameter
G....CM = Size and type pipe thread

NB: TIPO FILETTATURA/THREDDING TYPE

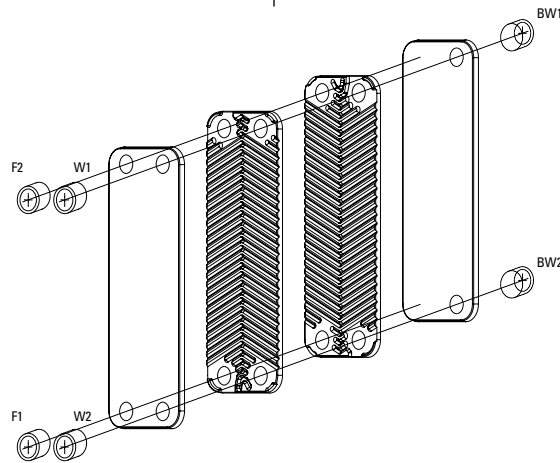
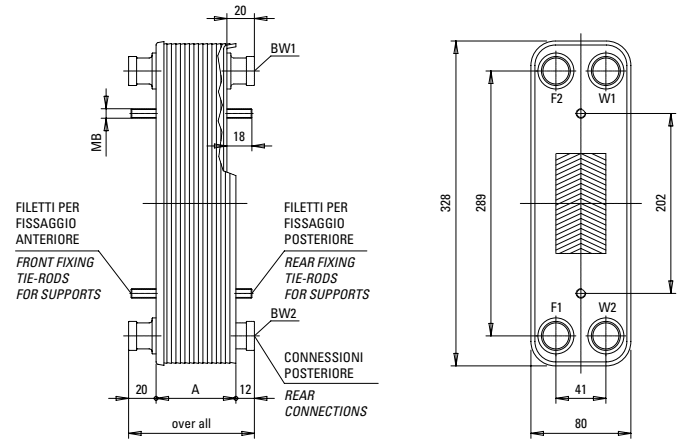
J = filetto conico C = filetto cilindrico + M = filetto maschio + F = filetto femmina + L = attacco lungo + C = attacco corto Vuoto = attacco normale
J = Conical C = Cylindrical + M = Male + F = Female + L = Long length connection + C = Short length connection Empty space = standard

VERSIONE NORMALE STANDARD / STANDARD NORMAL VERSION



ACCESSORI POSSIBILI/OPTIONAL ON REQUEST

DA SPECIFICARE IN FASE D'ORDINE/TO BE SPECIFIED ON ORDER



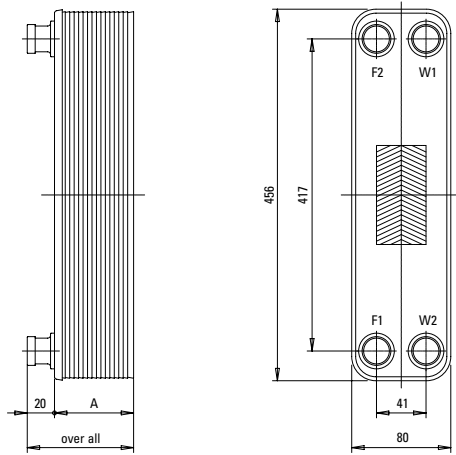
DATI TECNICI - TECHNICAL DATA

VERSIONE / VERSION		S09 (R410A)			
POTENZA "in condizioni standard di lavoro"	CAPACITY (nominal conditions)	12 kW			
		Circuito - Circuit			
PRESSIONE MASSIMA DI LAVORO	MAXIMUM ALLOWABLE WORKING PRESSURE	50°C	F1-F2: 46 bar	W1-W2: 47 bar	
		120°C	F1-F2: 36 bar	W1-W2: 37 bar	
		300°C	F1-F2: 26 bar	W1-W2: 27 bar	
TEMPERATURA MINIMA DI LAVORO	MIN. DESIGN TEMPERATURE	- 100 °C (-148 °F)			
TEMPERATURA MASSIMA DI LAVORO	MAX DESIGN TEMPERATURE	+ 300 °C (+572 °F)			
NUMERO DI PIASTRE "NP"	NUMBER OF PLATES	min.: 8 max: 50			
NUMERO DI CAMERE	NUMBER PER CHAMBER	Circ./Circuit side F1-F2: (NP/2-1)	Circ./Circuit side W1-W2: (NP/2)		
VOLUME PER CAMERA	VOLUME PER CHAMBER	0.0474 litri/liters			
PORTATA MASSIMA	TOTAL FLOW RATE m ³ /h			
PESO COMPLESSIVO "P"	TOTAL WEIGHT	P=Np x 0.09 + 1 kg			
CONNESSIONE STANDARD CIRCUITO	STANDARD CONNECTION FOR CIRCUIT	F1:	ODS 18	F2:	ODS 22
		W1:	G 1/2" Conico/Conical	W2:	G 1/2" Conico/ Conical
CONNESSIONI A RICHIESTA "Da specificare in fase d'ordine"	CONNECTION REQUIRED "To be specified on order"	ODS 9.5	G 1/2" Cilindrico/Cylindrical	Rotalock 3/4"	
		ODS 14	G 1/2" Femmina /Female	Rotalock 1"	
			G 3/4" Cilindrico/ Cylindrical		

MATERIALI - MATERIALS

MATERIALE PIASTRA DI SCAMBIO:	PLATE HEAT EXCHANGER MATERIAL:	1.4401 - EN10028/7 "AISI 316L"
MATERIALE CONNESSIONI:	CONNECTIONS MATERIAL:	1.4401 - EN10028/7 "AISI 316L"
MATERIALE BRASANTE:	BRAZING MATERIAL:	RAME PURO / COPPER- Cu -

VERSIONE NORMALE STANDARD / STANDARD NORMAL VERSION

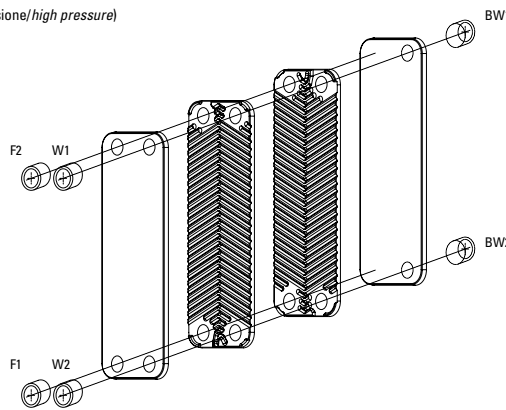
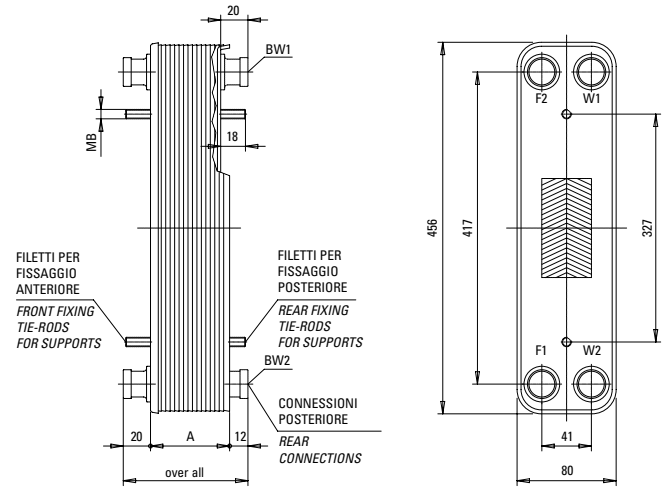


$$A = (N_p \times 2,45) + 12 \text{ (versione/version S22 normale/normal)}$$

$$A = (N_p \times 2,45) + 20 \text{ (versione/version S22H alta pressione/high pressure)}$$

ACCESSORI POSSIBILI/OPTIONAL ON REQUEST

DA SPECIFICARE IN FASE D'ORDINE/TO BE SPECIFIED ON ORDER



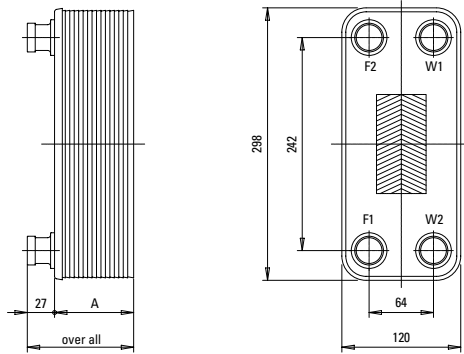
DATI TECNICI - TECHNICAL DATA

VERSIONE / VERSION		S22		S22 H (R410A)		
POTENZA "in condizioni standard di lavoro"	CAPACITY (nominal conditions)	28 kW				
		Circuito - Circuit				
PRESSIONE MASSIMA DILAVORO	MAXIMUM ALLOVABLE WORKING PRESSURE	50°C	F1-F2: 37 bar	W1-W2: 25 bar	F1-F2: 47 bar	W1-W2: 45 bar
		120°C	F1-F2: 29 bar	W1-W2: 20 bar	F1-F2: 37 bar	W1-W2: 35 bar
		300°C	F1-F2: 21 bar	W1-W2: 14 bar	F1-F2: 27 bar	W1-W2: 26 bar
TEMPERATURA MINIMA DI LAVORO	MIN. DESIGN TEMPERATURE	- 100 °C (-148 °F)				
TEMPERATURA MASSIMA DI LAVORO	MAX DESIGN TEMPERATURE	+ 300 °C (+572 °F)				
NUMERO DI PIASTRE "NP"	NUMBER OF PLATES	min.: 8		max: 60		
NUMERO DI CAMERE	NUMBER PER CHAMBER	Circ./Circuit side F1-F2: (NP/2-1)		Circ./Circuit side W1-W2: (NP/2)		
VOLUME PER CAMERA	VOLUME PER CHAMBER	0,0649 litri/liters				
PORTATA MASSIMA	TOTAL FLOW RATE	... m ³ /h				
PESO COMPLESSIVO "P"	TOTAL WEIGHT	P=Np x 0.13 + 1,5 kg		P=Np x 0.13 + 3,5 kg		
CONNESSIONE STANDARD CIRCUITO	STANDARD CONNECTION FOR CIRCUIT	F1:	ODS 18	F2:	ODS 22	
		W1:	G 1/2" Conico/ Conical	W2:	G 1/2" Conico/ Conical	
CONNESSIONI A RICHIESTA "Da specificare in fase d'ordine"	CONNECTION REQUIRED "To be specified on order"	ODS 9,5	G 1/2" Cilindrico/ Cylindrical	G 1/2" Femmina/Female		
		ODS 14	G 3/4" Conico/ Conical	Rotalock 3/4"		
			G 3/4" Cilindrico/ Cylindrical	Rotalock 1"		

MATERIALI - MATERIALS

MATERIALE PIASTRA DI SCAMBIO:	PLATE HEAT EXCHANGER MATERIAL:	1.4401 - EN10028/7 "AISI 316L"
MATERIALE CONNESSIONI:	CONNECTIONS MATERIAL:	1.4401 - EN10028/7 "AISI 316L"
MATERIALE BRASANTE:	BRAZING MATERIAL:	RAME PURO / COPPER- Cu -

VERSIONE NORMALE STANDARD / STANDARD NORMAL VERSION

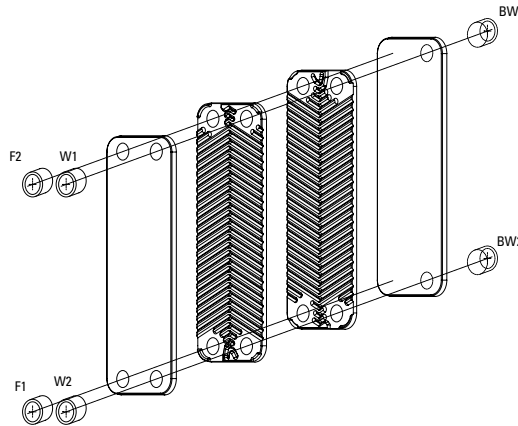
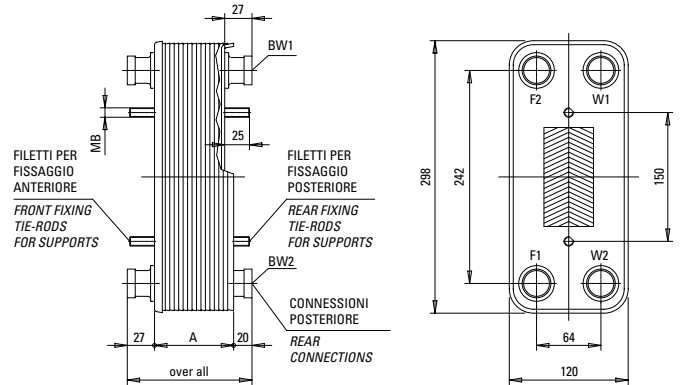


$$A = (N_p \times 2,45) + 12 \text{ (versione/version S12 normale/normal)}$$

$$A = (N_p \times 2,45) + 20 \text{ (versione/version S12H alta pressione/high pressure)}$$

ACCESSORI POSSIBILI/OPTIONAL ON REQUEST

DA SPECIFICARE IN FASE D'ORDINE/TO BE SPECIFIED ON ORDER



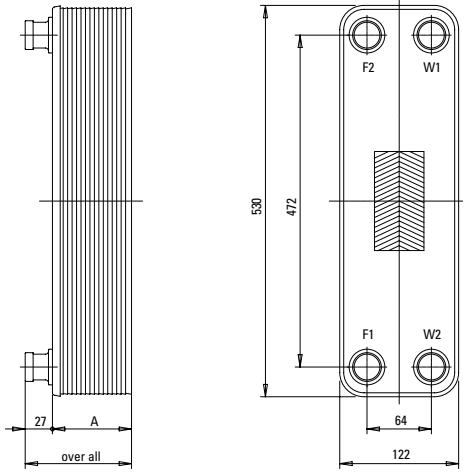
DATI TECNICI - TECHNICAL DATA

VERSIONE / VERSION		S12		S12 H (R410A)		
POTENZA "in condizioni standard di lavoro"	CAPACITY (nominal conditions)	30 kW				
		Circuito - Circuit				
PRESSIONE MASSIMA DI LAVORO	MAXIMUM ALLOWABLE WORKING PRESSURE	50°C	F1-F2: 40 bar	W1-W2: 38 bar	F1-F2: 53 bar	W1-W2: 56 bar
		120°C	F1-F2: 31 bar	W1-W2: 30 bar	F1-F2: 42 bar	W1-W2: 44 bar
		300°C	F1-F2: 23 bar	W1-W2: 22 bar	F1-F2: 31 bar	W1-W2: 32 bar
TEMPERATURA MINIMA DI LAVORO	MIN. DESIGN TEMPERATURE	- 100 °C (-148 °F)				
TEMPERATURA MASSIMA DI LAVORO	MAX DESIGN TEMPERATURE	+ 300 °C (+572 °F)				
NUMERO DI PIASTRE "NP"	NUMBER OF PLATES	min.: 8		max: 60		
NUMERO DI CAMERE	NUMBER PER CHAMBER	Circ./Circuit side F1-F2: (NP/2-1)		Circ./Circuit side W1-W2: (NP/2)		
VOLUME PER CAMERA	VOLUME PER CHAMBER	0,0708 litri/liters				
PORTATA MASSIMA	TOTAL FLOW RATE m³/h				
PESO COMPLESSIVO "P"	TOTAL WEIGHT	P=Np x 0.112 + 1,7 kg		P=Np x 0.112 + 4 kg		
		F1: ODS 22	F2: ODS 28			
CONNESSIONE STANDARD CIRCUITO	STANDARD CONNECTION FOR CIRCUIT	W1: G 1" Conico/ Conical	W2: G 1" Conico/ Conical			
CONNESSIONI A RICHIESTA "Da specificare in fase d'ordine"	CONNECTION REQUIRED "To be specified on order"	ODS 35	G 1/2" Femmina/Female	G 1" 1/4 Cilindrico/ Cylindrical		
			G 1" Cilindrico/ Cylindrical	DN32 1" 1/4 Flexible Joint		
			G 1" 1/4" Conico/ Conical	Rotalock (a richiesta) - (on request)		

MATERIALI - MATERIALS

MATERIALE PIASTRA DI SCAMBIO:	PLATE HEAT EXCHANGER MATERIAL:	1.4401 - EN10028/7 "AISI 316L"
MATERIALE CONNESSIONI:	CONNECTIONS MATERIAL:	1.4401 - EN10028/7 "AISI 316L"
MATERIALE BRASANTE:	BRAZING MATERIAL:	RAME PURO / COPPER- Cu -

VERSIONE NORMALE STANDARD / STANDARD NORMAL VERSION

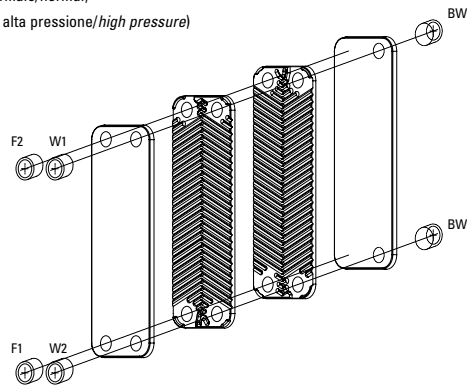
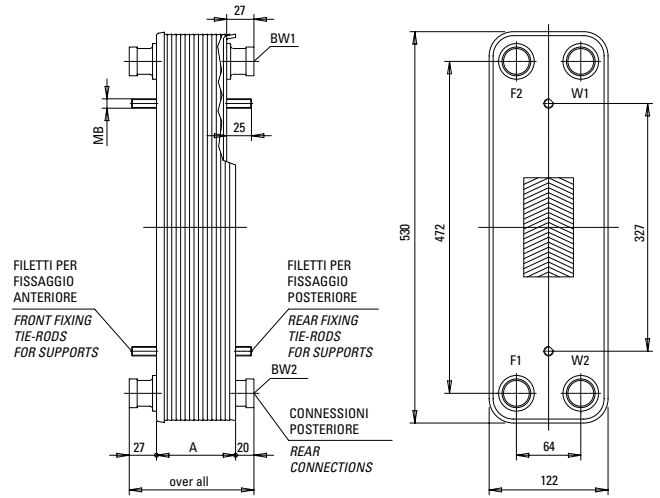


$$A = (N_p \times 2,45) + 12 \text{ (versione/version S82-S82D normale/normal)}$$

$$A = (N_p \times 2,45) + 20 \text{ (versione/version S82H-S82DH alta pressione/high pressure)}$$

ACCESSORI POSSIBILI/OPTIONAL ON REQUEST

DA SPECIFICARE IN FASE D'ORDINE/TO BE SPECIFIED ON ORDER



DATI TECNICI - TECHNICAL DATA

VERSIONE / VERSION		S82 - S82D		S82H - S82HD (R410A)		
POTENZA "in condizioni standard di lavoro"	CAPACITY (nominal conditions)	85 kW				
		Circuito - Circuit				
PRESSIONE MASSIMA DI LAVORO	MAXIMUM ALLOWABLE WORKING PRESSURE	50°C	F1-F2: 46 bar	W1-W2: 40 bar	F1-F2: 57 bar	W1-W2: 52 bar
		120°C	F1-F2: 36 bar	W1-W2: 31 bar	F1-F2: 45 bar	W1-W2: 41 bar
		300°C	F1-F2: 26 bar	W1-W2: 23 bar	F1-F2: 33 bar	W1-W2: 30 bar
TEMPERATURA MINIMA DI LAVORO	MIN. DESIGN TEMPERATURE	- 100 °C (-148 °F)				
TEMPERATURA MASSIMA DI LAVORO	MAX DESIGN TEMPERATURE	+ 300 °C (+572 °F)				
NUMERO DI PIASTRE "NP"	NUMBER OF PLATES	min.: 8		max: 120		
NUMERO DI CAMERE	NUMBER PER CHAMBER	Circ./Circuit side F1-F2: (NP/2-1)		Circ./Circuit side W1-W2: (NP/2)		
VOLUME PER CAMERA	VOLUME PER CHAMBER	0,115 litri/liters				
PORTATA MASSIMA	TOTAL FLOW RATE	... m³/h				
PERO COMPLESSIVO "P"	TOTAL WEIGHT	P=Np x 0.206 + 2,5 kg		P=Np x 0.206 + 6,5 kg		
CONNESSIONE STANDARD CIRCUITO	STANDARD CONNECTION FOR CIRCUIT	F1:	ODS 22	F2:	ODS 35	
		W1:	G 1" 1/4 Conico/ Conical	W2:	G 1" 1/4 Conico/ Conical	
CONNESSIONI A RICHIESTA "Da specificare in fase d'ordine"	CONNECTION REQUIRED "To be specified on order"	ODS 28	G 1/2" Femmina/Female	DN 32	1" 1/4 Flexible Joint	
			G 1" Conico/ Conical	DN 40	1" 1/2 Flexible Joint	
			G 1" Cilindrico/Cylindrical	Rotalock (a richiesta) - (on request)		
			G 1" 1/4 Cilindrico/Cylindrical			

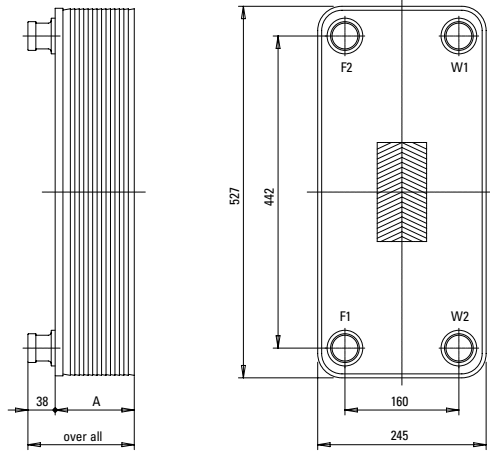
MATERIALI - MATERIALS

MATERIALE PIASTRA DI SCAMBIO:	PLATE HEAT EXCHANGER MATERIAL:	1.4401 - EN10028/7 "AISI 316L"
MATERIALE CONNESSIONI:	CONNECTIONS MATERIAL:	1.4401 - EN10028/7 "AISI 316L"
MATERIALE BRASANTE:	BRAZING MATERIAL:	RAME PURO / COPPER- Cu -

S202

SCAMBIATORI A PIASTRE PLATE HEAT EXCHANGERS

VERSIONE NORMALE STANDARD / STANDARD NORMAL VERSION

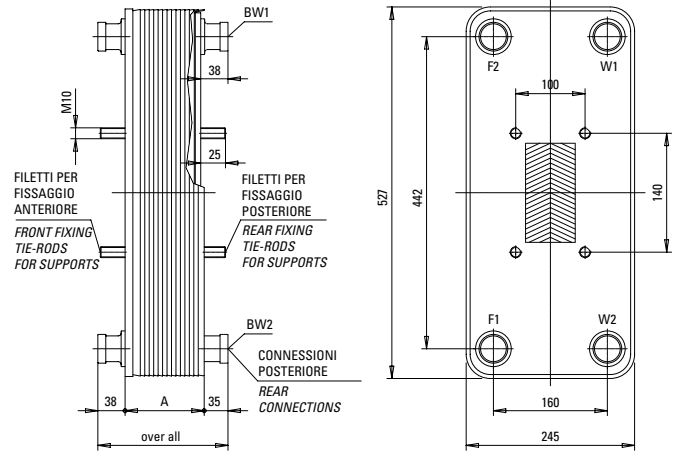


$$A = (N_p \times 2,45) + 12 \text{ (versione S202-S202D)}$$

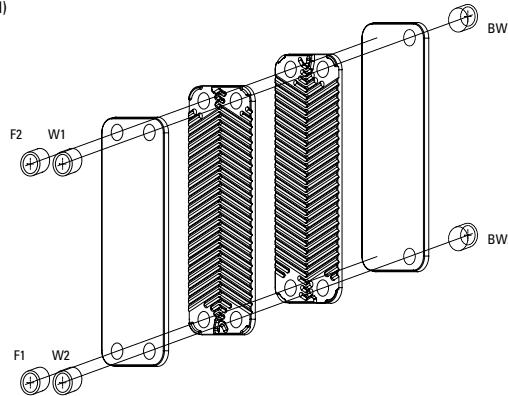
$$A = (N_p \times 2,45) + 28 \text{ (versione S202H-S202DH)}$$

ACCESSORI POSSIBILI/OPTIONAL ON REQUEST

DA SPECIFICARE IN FASE D'ORDINE/TO BE SPECIFIED ON ORDER



NB: POSSIBILE ANCHE KIT DI SUPPORTO/ SUPPORT KIT AVAILABLE



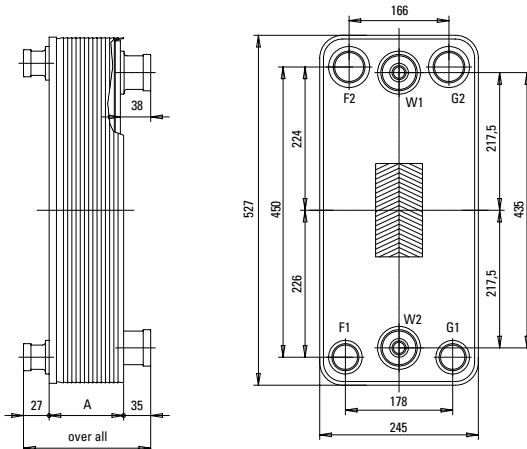
DATI TECNICI - TECHNICAL DATA

VERSIONE / VERSION		S202 - S202D		S202H - S202HD (R410A)		
POTENZA "in condizioni standard di lavoro"	CAPACITY (nominal conditions)	220 kW				
		Circuito - Circuit				
PRESSIONE MASSIMA DI LAVORO	MAXIMUM ALLOVABLE WORKING PRESSURE	50°C	F1-F2: 35 bar	W1-W2: 35 bar	F1-F2: 48 bar	W1-W2: 35 bar
		120°C	F1-F2: 27 bar	W1-W2: 27 bar	F1-F2: 37 bar	W1-W2: 27 bar
		300°C	F1-F2: 20 bar	W1-W2: 20 bar	F1-F2: 27 bar	W1-W2: 20 bar
TEMPERATURA MINIMA DI LAVORO	MIN. DESIGN TEMPERATURE	- 100 °C (-148 °F)				
TEMPERATURA MASSIMA DI LAVORO	MAX DESIGN TEMPERATURE	+ 300 °C (+572 °F)				
NUMERO DI PIASTRE "NP"	NUMBER OF PLATES	min.: 8		max: 150		
NUMERO DI CAMERE	NUMBER PER CHAMBER	Circ./Circuit side F1-F2: (NP/2-1)		Circ./Circuit side W1-W2: (NP/2)		
VOLUME PER CAMERA	VOLUME PER CHAMBER	0,255 litri/liters				
PORTATA MASSIMA	TOTAL FLOW RATE m ³ /h				
PESO COMPLESSIVO "P"	TOTAL WEIGHT	P=Np x 0.406 + 9,2 kg		P=Np x 0.406 + 18 kg		
CONNESSIONE STANDARD CIRCUITO	STANDARD CONNECTION FOR CIRCUIT	F1:	ODS 35	F2:	ODS 54	
		W1:	G 2" Conico/ Conical	W2:	G 2" Conico/ Conical	
CONNESSIONI A RICHIESTA "Da specificare in fase d'ordine"	CONNECTION REQUIRED "To be specified on order"	G 1/2" Femmina/ Female		DN 50 2" Flexible Joint		
		G 1 1/2 Conico/ Conical		DN 65 2" 1/2 Flexible Joint		
		G 1 1/2 Cilindrico/ Cylindrical				
		G 2" Cilindrico/ Cylindrical				
		G 2" 1/2 Cilindrico/ Cylindrical				

MATERIALI - MATERIALS

MATERIALE PIASTRA DI SCAMBIO:	PLATE HEAT EXCHANGER MATERIAL:	1.4401 - EN10028/7 "AISI 316L"
MATERIALE CONNESSIONI:	CONNECTIONS MATERIAL:	1.4401 - EN10028/7 "AISI 316L"
MATERIALE BRASANTE:	BRAZING MATERIAL:	RAME PURO / COPPER- Cu -

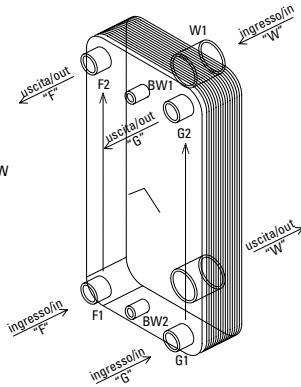
VERSIONE NORMALE STANDARD / STANDARD NORMAL VERSION



A= (Np x 2,45)+12 (versione/ version S2022-S222D)
A= (Np x 2,45)+28 (versione/ version S222H-S222DH)

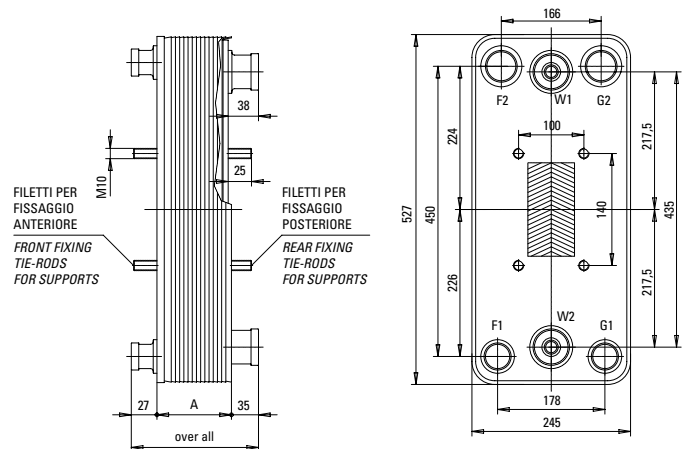
STANDARD

VERSIONE NORMALE / NORMAL VERSION



ACCESSORI POSSIBILI/OPTIONAL ON REQUEST

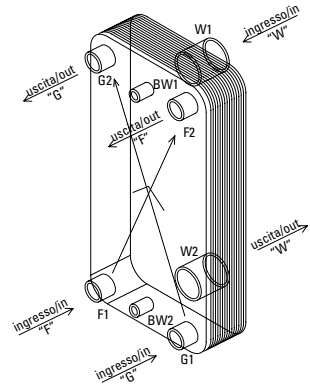
DA SPECIFICARE IN FASE D'ORDINE/TO BE SPECIFIED ON ORDER



NB: POSSIBILE ANCHE KIT DI SUPPORTO/ SUPPORT KIT AVAILABLE

A RICHIESTA/ON REQUEST

VERSIONE INCROCIATA/CROSS VERSION



DATI TECNICI - TECHNICAL DATA

VERSIONE / VERSION		S222 - S222D			S222H - S222HD (R410A)			
POTENZA "in condizioni standard di lavoro"	CAPACITY (nominal conditions)	2x110 kW						
		Circuito - Circuit						
PRESSIONE MASSIMA DI LAVORO	MAXIMUM ALLOVABLE WORKING PRESSURE	50°C	F1-F2: 40 bar	G1-G2: 40 bar	W1-W2: 36 bar	F1-F2: 45 bar	G1-G2: 45 bar	W1-W2: 55 bar
		120°C	F1-F2: 31 bar	G1-G2: 31 bar	W1-W2: 28 bar	F1-F2: 35 bar	G1-G2: 35 bar	W1-W2: 43 bar
		300°C	F1-F2: 23 bar	G1-G2: 23 bar	W1-W2: 21 bar	F1-F2: 26 bar	G1-G2: 26 bar	W1-W2: 32 bar
TEMPERATURA MINIMA DI LAVORO	MIN. DESIGN TEMPERATURE	- 100 °C (-148 °F)						
TEMPERATURA MASSIMA DI LAVORO	MAX DESIGN TEMPERATURE	+ 300 °C (+572 °F)						
NUMERO DI PIASTRE "NP"	NUMBER OF PLATES	min.: 14		max: 210				
NUMERO DI CAMERE	NUMBER PER CHAMBER	Circ./Circuit side F1-F2: (NP/2-1)			Circ./Circuit side W1-W2: (NP/2)			
VOLUME PER CAMERA	VOLUME PER CHAMBER	0,227 litri/liters						
PORTATA MASSIMA	TOTAL FLOW RATE m³/h						
PESO COMPLESSIVO "P"	TOTAL WEIGHT	P=Np x 0.406 + 9,2 kg			P=Np x 0.406 + 18 kg			
CONNESSIONE STANDARD CIRCUITO	STANDARD CONNECTION FOR CIRCUIT	F1:	ODS 28		F2:	ODS 42		
		G1:	ODS 28		G2:	ODS 42		
		W1:	G 2" Cilindrico/ Cylindrical		W2:	G 2" Cilindrico/ Cylindrical		
PORTATA SONDA	SENSOR POCKET	BW1:	G 1/2 Femmina/ Female		BW2:	G 1/2 Femmina/ Female		
CONNESSIONI A RICHIESTA "Da specificare in fase d'ordine"	CONNECTION REQUIRED "To be specified on order"	F1 - F2 e G1 - G2:	ODS 22	G 3/4" Cilindrico/ Cylindrical	W1 - W2:	DN 50	2" Flexible Joint	
			ODS 35	G 2" Conico/Conical		DN 65	2" 1/2 Flexible Joint	
				G2" 1/2 Cilindrico/ Cylindrical				

MATERIALI - MATERIALS

MATERIALE PIASTRA DI SCAMBIO:	PLATE HEAT EXCHANGER MATERIAL:	1.4401 - EN10028/7 "AISI 316L"
MATERIALE CONNESSIONI:	CONNECTIONS MATERIAL:	1.4401 - EN10028/7 "AISI 316L"
MATERIALE BRASANTE:	BRAZING MATERIAL:	RAME PURO / COPPER- Cu -

BRAZED PLATE HEAT EXCHANGERS

S09
12 kW

S22
28 kW

S12
30 kW

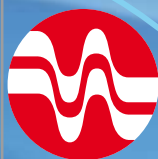
S82
85 kW

S202
220 kW

S222
220 kW **dual circuit**



Advanced
Heat Transfer
Solutions



ONDA

Ready for R410A

S404
440 kW

S424
440 kW **dual circuit**

S606
660 kW

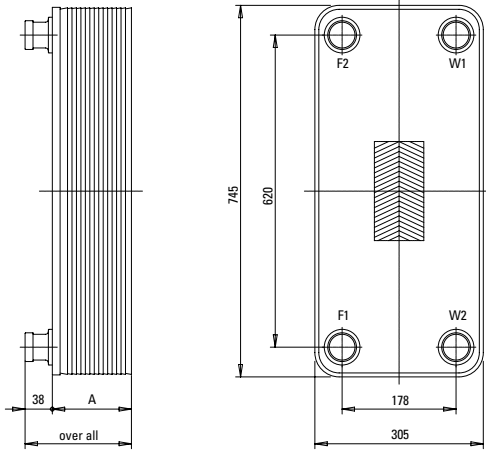


Brazed Plate

S404

SCAMBIATORI A PIASTRE PLATE HEAT EXCHANGERS

VERSIONE NORMALE STANDARD / STANDARD NORMAL VERSION

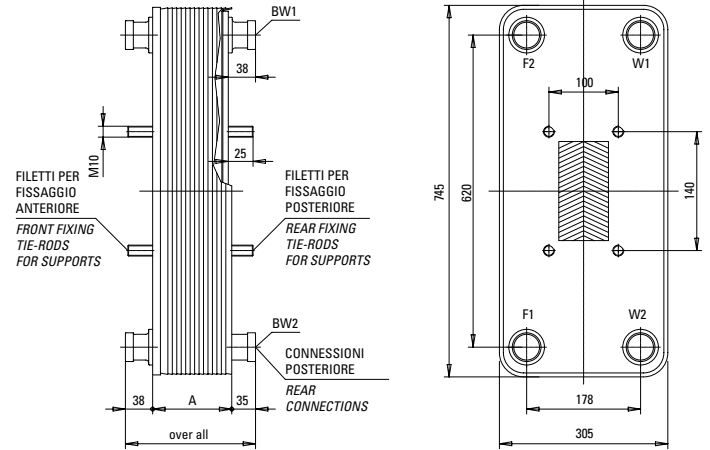


$$A = (N_p \times 2,95) + 12 \text{ (versione/ version S404-S404D)}$$

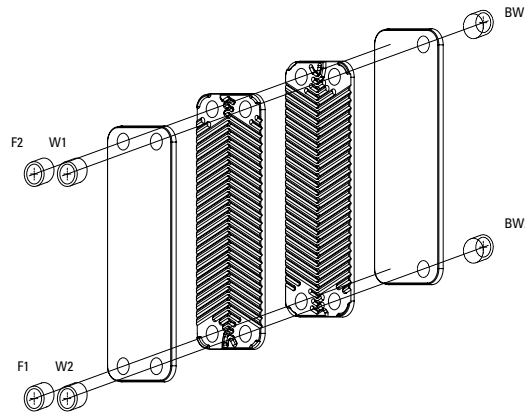
$$A = (N_p \times 2,95) + 28 \text{ (versione/ version S404H-S404DH)}$$

ACCESSORI POSSIBILI/OPTIONAL ON REQUEST

DA SPECIFICARE IN FASE D'ORDINE/TO BE SPECIFIED ON ORDER



NB: POSSIBILE ANCHE KIT DI SUPPORTO/ SUPPORT KIT AVAILABLE



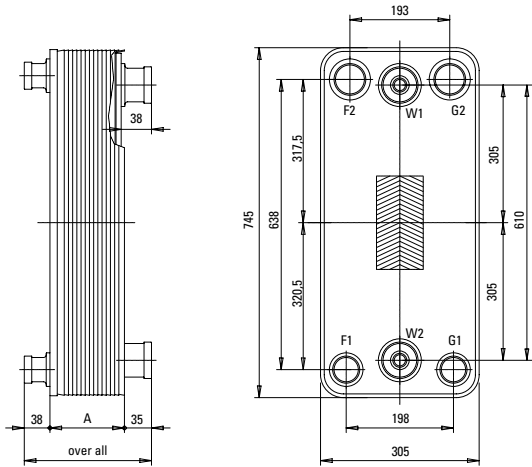
DATI TECNICI - TECHNICAL DATA

VERSIONE / VERSION		S404 - S404D			
POTENZA "in condizioni standard di lavoro"	CAPACITY (nominal conditions)	440 kW			
		Circuito - Circuit			
PRESSIONE MASSIMA LAVORO	MAXIMUM ALLOWABLE WORKING PRESSURE	50°C	F1-F2: 38 bar	W1-W2: 35 bar	
		120°C	F1-F2: 30 bar	W1-W2: 27 bar	
		300°C	F1-F2: 22 bar	W1-W2: 19 bar	
TEMPERATURA MINIMA DI LAVORO	MIN. DESIGN TEMPERATURE	- 100 °C (-148 °F)			
TEMPERATURA MASSIMA DI LAVORO	MAX DESIGN TEMPERATURE	+ 300 °C (+572 °F)			
NUMERO DI PIASTRE "NP"	NUMBER OF PLATES	min.: 20		max.: 250	
NUMERO DI CAMERE	NUMBER PER CHAMBER	Circ./Circuit side F1-F2: (NP/2-1)		Circ./Circuit side W1-W2: (NP/2)	
VOLUME PER CAMERA	VOLUME PER CHAMBER	0,56 litri/liters			
PORTATA MASSIMA	TOTAL FLOW RATE m ³ /h			
PESO COMPLESSIVO "P"	TOTAL WEIGHT	P=Np x 0,720 + 30 kg			
CONNESSIONE STANDARD CIRCUITO	STANDARD CONNECTION FOR CIRCUIT	F1:	ODS 54	F2:	ODS 76
		W1:	G 3" Cilindrico/ Cylindrical	W2:	G 2" Cilindrico/ Cylindrical
CONNESSIONI A RICHIESTA "Da specificare in fase d'ordine"	CONNECTION REQUIRED "To be specified on order"	ODS 64	G 2" 1/2	DN 65	2" 1/2 Flexible Joint
				DN 80	3" Flexible Joint

MATERIALI - MATERIALS

MATERIALE PIASTRA DI SCAMBIO:	PLATE HEAT EXCHANGER MATERIAL:	1.4401 - EN10028/7 "AISI 316L"
MATERIALE CONNESSIONI:	CONNECTIONS MATERIAL:	1.4401 - EN10028/7 "AISI 316L"
MATERIALE BRASANTE:	BRAZING MATERIAL:	RAME PURO / COPPER- Cu -

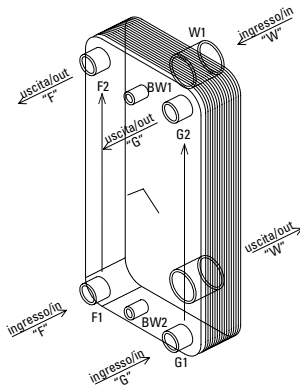
VERSIONE NORMALE STANDARD / STANDARD NORMAL VERSION



$A = (Np \times 2,95) + 12$ (versione/ version S424-S424D)
 $A = (Np \times 2,95) + 28$ (versione/ version S424H-S424DH)

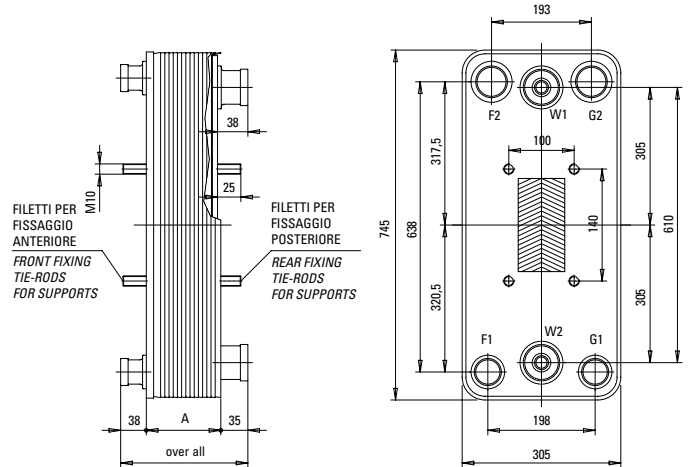
STANDARD

VERSIONE NORMALE / NORMAL VERSION



ACCESSORI POSSIBILI/OPTIONAL ON REQUEST

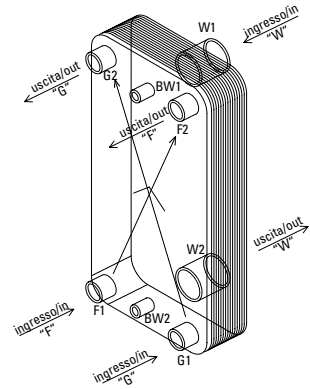
DA SPECIFICARE IN FASE D'ORDINE/TO BE SPECIFIED ON ORDER



NB: POSSIBILE ANCHE KIT DI SUPPORTO/ SUPPORT KIT AVAILABLE

A RICHIESTA/ON REQUEST

VERSIONE INCROCIATA/CROSS VERSION



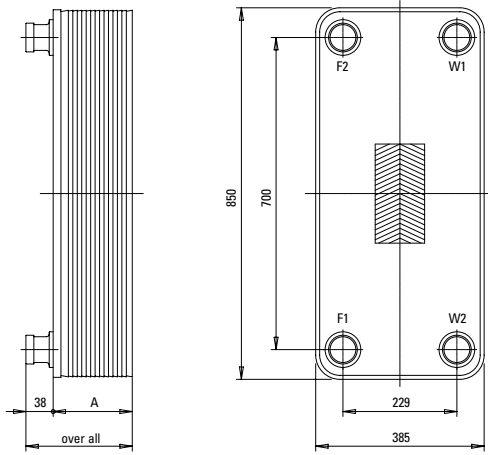
DATI TECNICI - TECHNICAL DATA

VERSIONE / VERSION		S424 - S424D			
POTENZA "in condizioni standard di lavoro"	CAPACITY (nominal conditions)	2x220 kW			
		Circuito - Circuit			
PRESSIONE MASSIMA DI LAVORO	MAXIMUM ALLOVABLE WORKING PRESSURE	50°C	F1-F2: 35 bar	G1-G2: 36 bar	W1-W2: 31 bar
		120°C	F1-F2: 27 bar	G1-G2: 28 bar	W1-W2: 24 bar
		300°C	F1-F2: 19 bar	G1-G2: 20 bar	W1-W2: 18 bar
TEMPERATURA MINIMA DI LAVORO	MIN. DESIGN TEMPERATURE	- 100 °C (-148 °F)			
TEMPERATURA MASSIMA DI LAVORO	MAX DESIGN TEMPERATURE	+ 300 °C (+572 °F)			
NUMERO DI PIASTRE "NP"	NUMBER OF PLATES	min.: 18 max: 252			
NUMERO DI CAMERE	NUMBER PER CHAMBER	Circ./Circuit side F1-F2: (NP/2-1)		Circ./Circuit side W1-W2: (NP/2)	
VOLUME PER CAMERA	VOLUME PER CHAMBER	0,486 litri/liters			
PORTATA MASSIMA	TOTAL FLOW RATE m ³ /h			
PESO COMPLESSIVO "P"	TOTAL WEIGHT	P=Np x 0.720 + 30 kg			
CONNESSIONE STANDARD CIRCUITO	STANDARD CONNECTION FOR CIRCUIT	F1:	ODS 54	F2:	ODS 54
		G1:	ODS 54	G2:	ODS 54
		W1:	G 3" Cilindrico/ Cylindrical	W2:	G 3" Cilindrico/ Cylindrical
PORTA SONDA	SENSOR POCKET	BW1:	G 1/2" Femmina/ Female	BW2:	G 1/2" Femmina/ Female
CONNESSIONI A RICHIESTA "Da specificare in fase d'ordine"	CONNECTION REQUIRED "To be specified on order"	ODS 64	G 3/4" Cilindrico/ Cylindrical	DN 65	2" 1/2 Flexible Joint
			G 2" 1/2 Cilindrico/ Cylindrical	DN 80	3" Flexible Joint

MATERIALI - MATERIALS

MATERIALE PIASTRA DI SCAMBIO:	PLATE HEAT EXCHANGER MATERIAL:	1.4401 - EN10028/7 "AISI 316L"
MATERIALE CONNESSIONI:	CONNECTIONS MATERIAL:	1.4401 - EN10028/7 "AISI 316L"
MATERIALE BRASANTE:	BRAZING MATERIAL:	RAME PURO / COPPER- Cu -

VERSIONE NORMALE STANDARD / STANDARD NORMAL VERSION

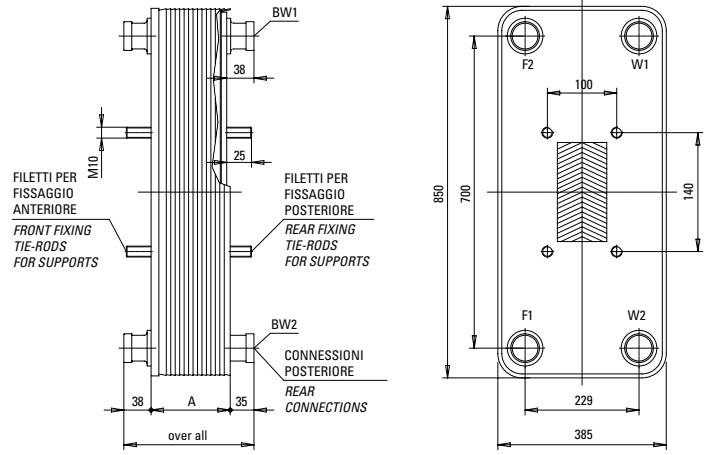


$$A = (N_p \times 2,95) + 12 \text{ (versione/version S404-S404D)}$$

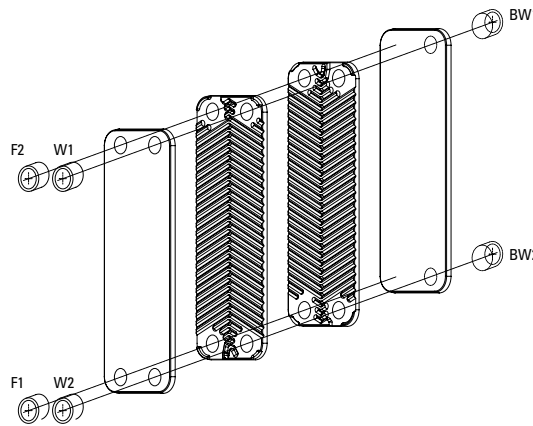
$$A = (N_p \times 2,95) + 28 \text{ (versione/version S404H-S404DH)}$$

ACCESSORI POSSIBILI/OPTIONAL ON REQUEST

DA SPECIFICARE IN FASE D'ORDINE/TO BE SPECIFIED ON ORDER



NB: POSSIBILE ANCHE KIT DI SUPPORTO/ SUPPORT KIT AVAILABLE

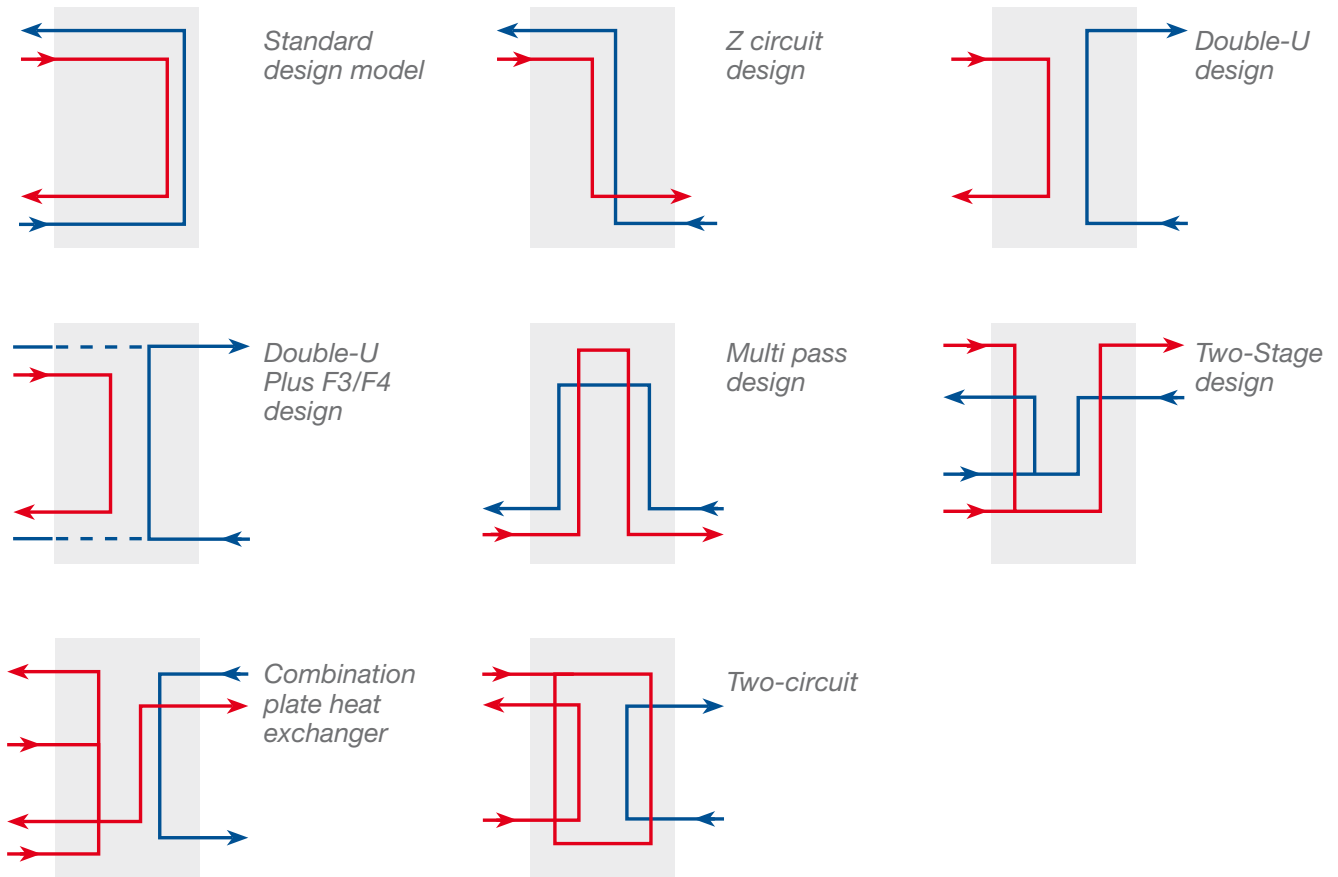


DATI TECNICI - TECHNICAL DATA

VERSIONE / VERSION		S606	
POTENZA "in condizioni standard di lavoro"	CAPACITY (nominal conditions)	660 kW	
		Circuito - Circuit	
PRESSIONE MASSIMA DI LAVORO	MAXIMUM ALLOVABLE WORKING PRESSURE	50°C F1-F2: .. bar	W1-W2: .. bar
		120°C F1-F2: .. bar	W1-W2: .. bar
		300°C F1-F2: .. bar	W1-W2: .. bar
TEMPERATURA MINIMA DI LAVORO	MIN. DESIGN TEMPERATURE	- 100 °C (-148 °F)	
TEMPERATURA MASSIMA DI LAVORO	MAX DESIGN TEMPERATURE	+ 300 °C (+572 °F)	
NUMERO DI PIASTRE "NP"	NUMBER OF PLATES	min.: 20 max: 250	
NUMERO DI CAMERE	NUMBER PER CHAMBER	Circ./Circuit side F1-F2: (NP/2-1)	Circ./Circuit side W1-W2: (NP/2)
VOLUME PER CAMERA	VOLUME PER CHAMBER	... litri/liters	
PORTATA MASSIMA	TOTAL FLOW RATE	... m³/h	
PESO COMPLESSIVO "P"	TOTAL WEIGHT	P=Np x .. + .. kg	
CONNESSIONE STANDARD CIRCUITO	STANDARD CONNECTION FOR CIRCUIT	F1: DN 80 3" Flexible Joint	F2: DN 100 4" Flexible Joint
		W1: G 4" Cilindrico/ Cylindrical	W2: G 4" Cilindrico/ Cylindrical
CONNESSIONI A RICHIESTA "Da specificare in fase d'ordine"	CONNECTION REQUIRED "To be specified on order"	G 2" 1/2 Cilindrico/ Cylindrical	DN 90 3" 1/2 Flexible Joint
		G 3" Cilindrico/ Cylindrical	G 3" 1/2 Cilindrico/ Cylindrical

MATERIALI - MATERIALS

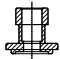
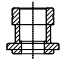
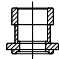
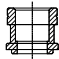
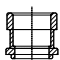
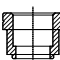
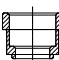
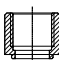
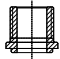
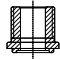
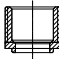
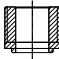
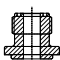
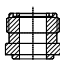
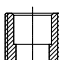
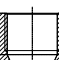
MATERIALE PIASTRA DI SCAMBIO:	PLATE HEAT EXCHANGER MATERIAL:	1.4401 - EN10028/7 "AISI 316L"
MATERIALE CONNESSIONI:	CONNECTIONS MATERIAL:	1.4401 - EN10028/7 "AISI 316L"
MATERIALE BRASANTE:	BRAZING MATERIAL:	RAME PURO / COPPER- Cu -

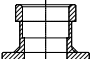

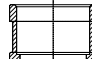


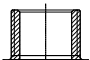
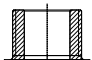
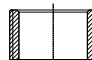
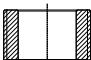
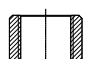

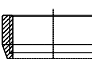
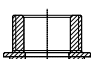
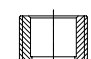
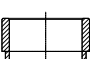
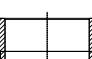
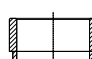
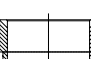




COMBINAZIONE - TIPOLOGIA ATTACCHI / CONFIGURATION - CONNECTIONS NO.					MONOCIRCUITO / SINGLE CIRCUIT				CODICE / CODE PART		
4 att.										(Vedi pag. 3 / See page 3)	
	F1	F2		W1	W2					AA	
	F1	F2				BW1	BW2			AB	
	F1	F2		W1			BW2			AC	
	F1	F2			W2	BW1				AD	
		F2		W1		BW1		BF2		AE	
		F2		W1			BW2	BF1		AF	
	F1				W2		BW2	BF1		AG	
	F1				W2	BW1		BF2		AH	
5 att.											
	F1	F2		W1	W2	BW1				BA	
	F1	F2		W1	W2		BW2			BB	
	F1	F2		W1		BW1	BW2			BC	
	F1	F2			W2	BW1	BW2			BD	
6 att.											
	F1	F2		W1	W2	BW1	BW2			CA	
	F1	F2		W1	W2			BF1	BF2	CB	
	F1	F2		W1	W2	BW1			BF2	CC	
	F1	F2		W1	W2		BW2	BF1		CD	
8 att.											
	F1	F2		W1	W2	BW1	BW2	BF1	BF2	DA	

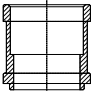
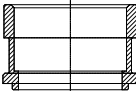
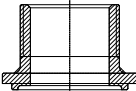
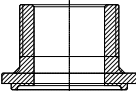
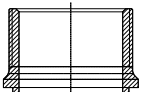
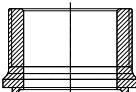
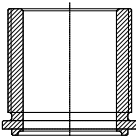
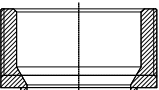
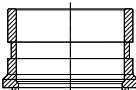
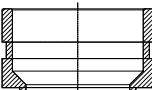
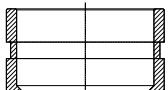

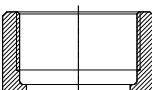
COMBINAZIONE - TIPOLOGIA ATTACCHI / CONFIGURATION - CONNECTIONS NO.					BICIRCUITO / DOUBLE CIRCUIT				CODICE / CODE PART		
6 att.										(Vedi pag. 3 / See page 3)	
	F1	F2	G1	G2			BW1	BW2		MA	
	F1	F2	G1	G2	W1	W2				MB	
7 att.											
	F1	F2	G1	G2	W1		BW1	BW2		NA	
	F1	F2	G1	G2		W2	BW1	BW2		NB	
	F1	F2	G1	G2	W1	W2	BW1			NC	
	F1	F2	G1	G2	W1	W2		BW2		ND	
8 att.											
	F1	F2	G1	G2	W1	W2	BW1	BW2		PA	

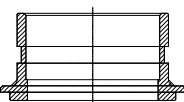
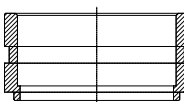

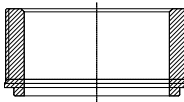
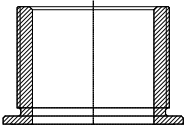
CONNESSIONI DISPONIBILI AVAILABLE CONNECTIONS

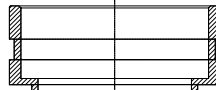
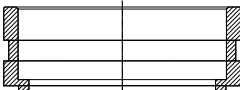
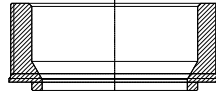
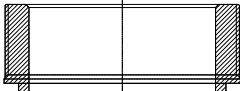
S09-S22			
ODS 9.5 e 3/8 INCH codice/code: PR001008 codice/code L9.5 	ODS 12.5 e 1/2 INCH codice/code: PR001014 codice/code L12.5 	ODS 14 codice/code: PR001009 codice/code L14 	ODS 16 e 5/8 INCH codice/code: PR001015 codice/code L16 
ODS 18 codice/code: PR001001 codice/code L918 	ODS 19 e 3/4 INCH codice/code: PR001016 codice/code L19 	ODS 22 e 7/8 INCH codice/code: PR001002 codice/code L22 	1/2" Gas Cil. Femmina/Female codice/code: PR001007 codice/code G2F 
1/2" Gas Cil. Maschio/Male codice/code: PR001003 codice/code G2C 	1/2" Gas Cil. Maschio/Male codice/code: PR001004 codice/code G2 	1/2" Gas Cil. Maschio/Male codice/code: PR001005 codice/code G3C 	1/2" Gas Cil. Maschio/Male codice/code: PR001006 codice/code G3 
ROTALOCK 3/4" codice/code: PR001013 codice/code R3/4-16UNF 	ROTALOCK 1" codice/code: PR001011 codice/code R31-14UNF 	3/4" Gas Cil. Lungo/Long codice/code: PR001010 codice/code G3SL 	3/4" Gas Cil. Femm. lungo/Female Long codice/code: PR001012 codice/code G3FL 

S12-S82-S222				
ODS 22 e 7/8 INCH codice/code: PR002001 codice/code L22A 	ODS 28 e 1"1/8 INCH codice/code: PR00102002 codice/code L28 	ODS 35 e 1"3/8 INCH codice/code: PR002003 codice/code L35 	ROTALOCK 1"1/4 codice/code: PR002018 codice/code R1"1/4-12UNF 	ROTALOCK 1"3/4 codice/code: PR002019 codice/code R1"3/4-12UN 
1" Gas con. Maschio/Male codice/code: PR002004 codice/code G4C 	1" Gas cil. Maschio/Male codice/code: PR002005 codice/code G4 	1"1/4 Gas con. Maschio/Male codice/code: PR002006 codice/code G5C 	1"1/4 Gas cil. Maschio/Male codice/code: PR002007 codice/code G5 	
3/4" Gas cil. Femmina/Female codice/code: PR002015 codice/code G3FA 	1" Gas cil. Femmina/Female codice/code: PR002012 codice/code G4F 	1"1/4 Gas cil. Femmina/Female codice/code: PR002013 codice/code G5F 	1" Gas cil. Maschio/Male corto/short codice/code: PR0020110 codice/code G4SC 	1" Gas cil. Maschio/Male lungo/long codice/code: PR002011 codice/code G4SL 
Flexible Joint 1"1/4 codice/code: PR002008 codice/code DN32 	Flexible Joint 1"1/2 codice/code: PR002009 codice/code DN40 	Flexible Joint 1"1/4 lungo/long codice/code: PR002016 codice/code DN32SL 	Flexible Joint 1"1/2 lungo/long codice/code: PR002014 codice/code DN40SL 	

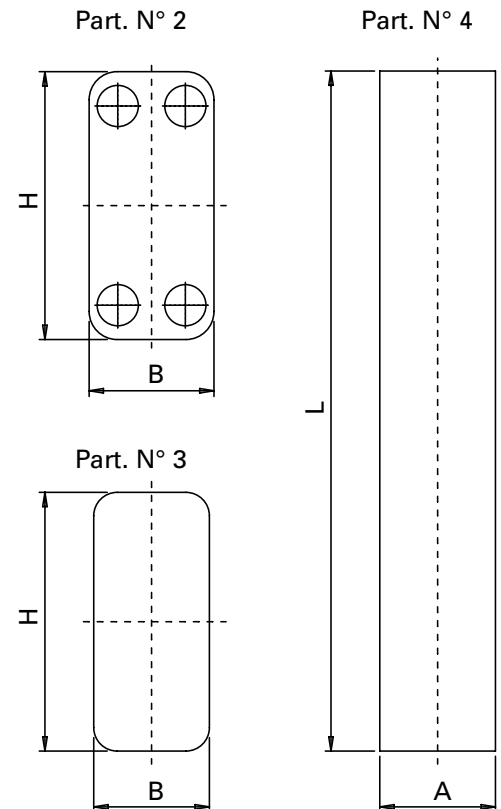
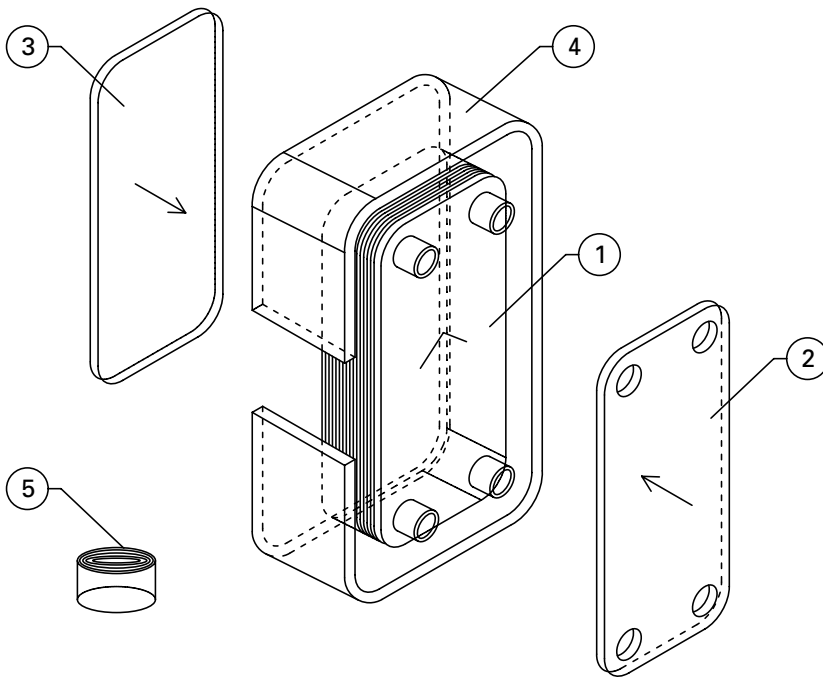
S222
ODS 42 e 1"5/8 INCH codice/code: PR004001 codice/code L942 
ODS 54 codice/code: PR004002 codice/code L54A 

S202-S222			
<p>ODS 35 e 1"3/8 INCH codice/code: PR003001 codice/code L35A</p> 	<p>ODS 54 codice/code: PR003002 codice/code L54</p> 	<p>1"1/2 Gas con. Maschio/Male codice/code: PR003003 codice/code G6C</p> 	<p>1"1/2 Gas cil. Maschio/Male codice/code: PR003004 codice/code G6</p> 
<p>2" Gas con. Maschio/Male codice/code: PR003005 codice/code G8C</p> 	<p>2" Gas cil. Maschio/Male codice/code: PR003006 codice/code G8</p> 	<p>2" Gas cil. Maschio Lungo /Male Long codice/code: PR003011 codice/code G8SL</p> 	
<p>2"1/2 Gas cil. Maschio/Male codice/code: PR003009 codice/code G10</p> 	<p>Flexible Joint 2" codice/code: PR003007 codice/code DN50</p> 	<p>Flexible Joint 2"1/2 codice/code: PR003008 codice/code DN65</p> 	<p>Flexible Joint 2"1/2 Øe=76 codice/code: PR003010 codice/code DN65SL</p> 
<p>1"1/2 Gas cil. Femmina/Female codice/code: PR003012 codice/code G6F</p> 	<p>2" Gas cil. Femmina/Female codice/code: PR003013 codice/code G8F</p> 		

S404-S424	
<p>ODS 64 - Flexible Joint 2"1/2 codice/code: PR005001 codice/code L64 - DN65</p> 	<p>ODS 76 - Flexible Joint 3" codice/code: PR005002 codice/code L76 - DN80</p> 
<p>2"1/2 Gas cil. Maschio/Male codice/code: PR005003 codice/code G10A</p> 	<p>3" Gas cil. Maschio/Male codice/code: PR005004 codice/code G12</p> 
<p>2"1/2 Gas cil. Maschio/Male codice/code: PR005005 codice/code G10ASL</p> 	

S606	
<p>ODS 90 - Flexible Joint 3"1/2 codice/code: PR00.... codice/code L90</p> 	<p>ODS 100 - Flexible Joint 4" codice/code: PR00.... codice/code L100</p> 
<p>3"1/2 Gas cil. Maschio/Male codice/code: PR00.... codice/code G14</p> 	<p>4" Gas cil. Maschio/Male codice/code: PR00.... codice/code G16</p> 

COIBENTAZIONE - ISOLAMENTO INSULATION



MATERIALE: POLIETILENE RETICOLATO ESPANSO

SPESSORE: 8 mm (a richiesta anche 16 mm)

TEMP. LAVORO: da -50°C a +105°C

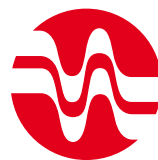
MATERIAL: EXPANDED RETICULAR POLYETHYLENE FOAM

THICKNESS: 8 mm (16 mm on request)

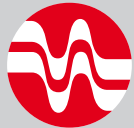
MIN. MAX WORKING TEMPERATURE: from -50°C to +105°C

ISOLAMENTO SCAMBIATORI DI CALORE / INSULATION HEAT EXCHANGER

ISOLAMENTO SCAMBIATORI DI CALORE / INSULATION HEAT EXCHANGER		
1	SCAMBIATORE DI CALORE SALDOBASATO	BRAZED PLATE HEATING HEAT EXCHANGER
2	RIVESTIMENTO PARTE FRONTALE CON BIADESIVO	FRONT ADHESIVE PANEL
3	RIVESTIMENTO PARTE INFERIORE CON BIADESIVO	REAR ADHESIVE PANEL
4	RIVESTIMENTO PARTE PERIMETRALE CON BIADESIVO	BORDER ADHESIVE PANEL
5	STRISCIA COPRIGIUNTURA (NASTRO DI COPERTURA)	COVER ADHESIVE STRIPE



DIMENSIONI ISOLAMENTO / INSULATION DIMENSIONS						
TIPO SCAMBIATORE HEAT EXCHANGERS TYPE		CODICE COIBENTAZIONE INSULATION CODE	DIMENSIONI / DIMENSIONS (mm)			
MODELLO/ MODEL	N°PIASTRE/PLATES		A	L	B	H
S09	0-20	PI800901	65	790	90	340
	22-40	PI800902	115			
	42-60	PI800903	165			
	62-80	PI800904	215			
S22	0-20	PI802201	65	1050	90	470
	22-40	PI802202	115			
	42-60	PI802203	165			
	62-80	PI802204	215			
S11 - S12	0-20	PI801201	65	800	135	310
	22-40	PI801202	115			
	42-60	PI801203	165			
	62-80	PI801204	215			
S71 - S72	0-20	PI807201	65	1220	135	515
	22-40	PI807202	115			
	42-60	PI807203	165			
	62-80	PI807204	215			
S82	0-20	PI808201	65	1275	135	540
	22-40	PI808202	115			
	42-60	PI808203	165			
	62-80	PI808204	215			
S202	0-20	PI820201	65	1485	255	540
	22-40	PI820202	115			
	42-60	PI820203	165			
	62-80	PI820204	215			
	82-100	PI820205	265			
S222	0-20	PI822201	65	1485	255	540
	22-40	PI822202	115			
	42-60	PI822203	165			
	92-80	PI822204	215			
	82-100	PI822205	265			
S404	0-20	PI840401	75	2035	315	760
	22-40	PI840402	135			
	42-60	PI840403	195			
	62-80	PI840404	255			
	82-100	PI840405	310			
S424	0-20	PI842401	75	2035	315	760
	22-40	PI842402	135			
	42-60	PI842403	195			
	62-80	PI842404	255			
	82-100	PI842405	310			



ONDA

Advanced
Heat Transfer
Solutions

Onda spa

Headquarter

via Lord Baden Powell, 11
36045 Lonigo (VI) Italy
T: +39 0444 720720
F. +39 0444 720721

Plate Division

via Vittoria, 158 A
36065 Mussolente (VI) Italy
T. +39 0424 87633
F. +39 0424 87744

Onda France spa

320, Avenue Berthelot
69371 Lyon France
T: +33 472784606
F. +33 472784807
www.onda-fr.com

www.onda-it.com
onda@onda-it.com